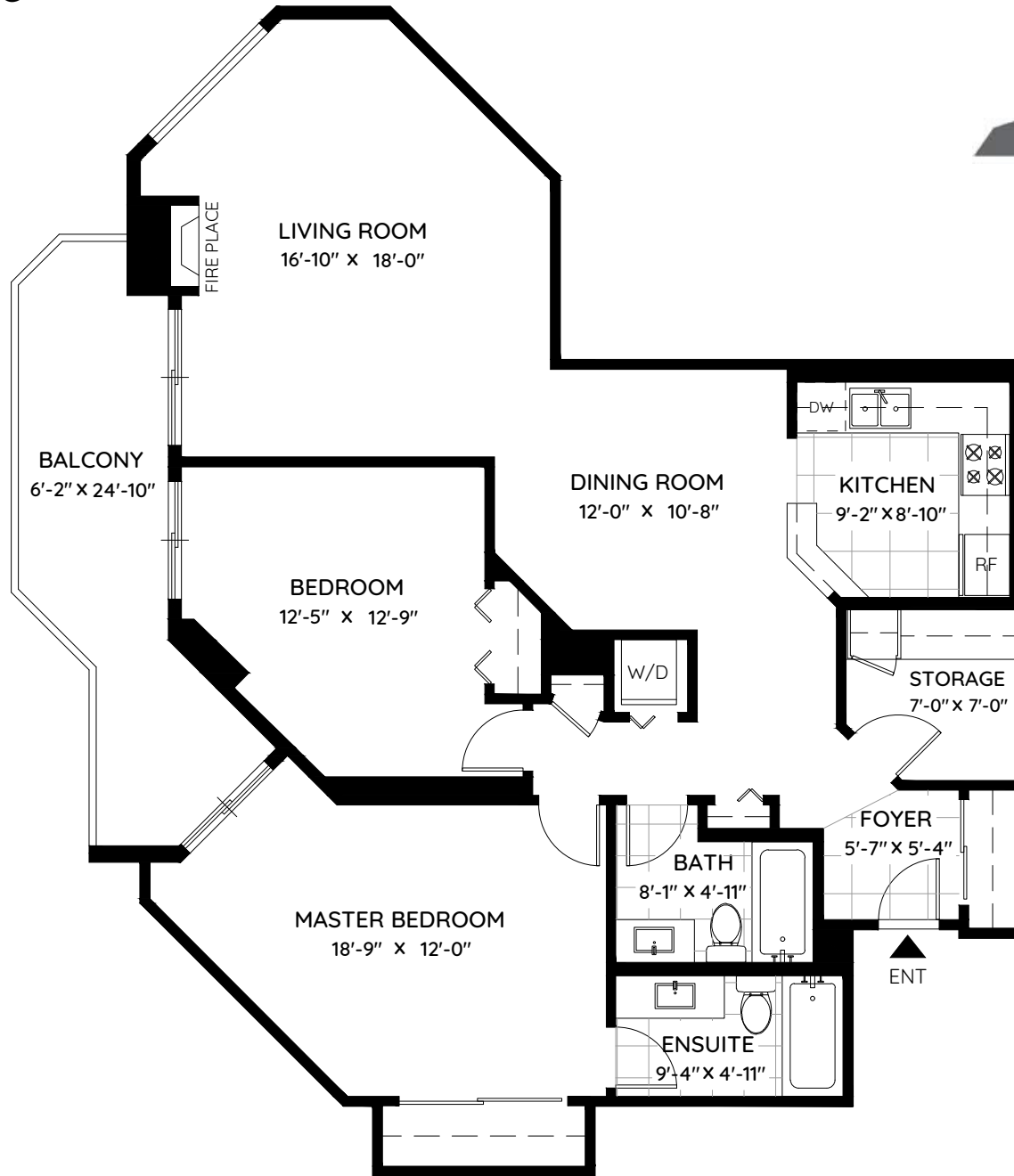


# 1207 - 1185 QUAYSIDE DRIVE

NEW WESTMINSTER, BC

LIVING AREA 1,218 SQ.FT.  
BALCONY 147 SQ.FT.  
CEILING HEIGHT 7'-11"



0 ft 3 ft 5 ft



The floor plan and the measurements are approximate and are to be used for advertising usage only.  
Not suitable for architectural or construction. E&O Insured